



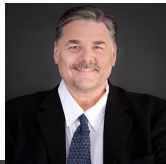
Call for a showing today:

**Ronda Aldridge**

Community Manager  
(503) 363-6234  
Sundial@cwres.com

**Chris Guernsey**

Oregon Sales Manager  
(503) 510-7373  
Chris.Guernsey@cwres.com

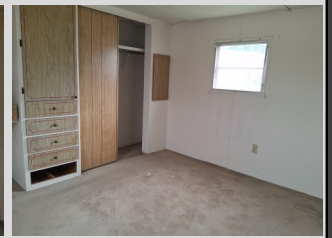
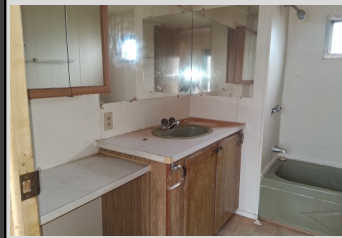


**HOME ADDRESS:**

2232 42nd Ave  
Space #210  
Salem, OR 97301

# \$5,000

Sundial MHP is a beautiful 55+ community in the heart of the Willamette Valley. The community is pet-friendly and boasts a calendar of activities, a neighborhood atmosphere and an impressive lineup of social amenities such as a club house, indoor pool/spa, library & billiard room.



## FIXER UPPER NOW AVAILABLE!

- 2 Bedrooms
- 1 Bathroom
- Covered Porch
- Carport
- Storage Shed
- \$1,265 Monthly Site Rent

2-bedroom, 1-bath mobile home with tons of potential! This fixer-upper is a great opportunity buyers looking to create affordable living space with their own personal touch. The home features a functional layout, spacious living area, and plenty of opportunity for updates and improvements.

Outside there is a covered porch, carport, and storage shed. Come check out this home!





## **LENDERS FOR FINANCING**

### **21<sup>ST</sup> MORTGAGE**

Joy Williams  
800-955-0021 ext. 1200  
[joywilliams@21stmortgage.com](mailto:joywilliams@21stmortgage.com)  
620 Market Street  
One Center Square  
Knoxville, TN 37902

### **FINANCIAL SERVICES UNLIMITED**

Bruce Zechenelly  
503-626-8590  
[fsu@fsuloan.com](mailto:fsu@fsuloan.com)  
11950 SW 2<sup>nd</sup> Street, Suite 300  
Beaverton, OR 97005

### **NORTHWEST HOUSING SERVICES, LLC**

Rick Budahl  
877-467-9144 phone  
208-461-8230 fax  
[rbudahl@cableone.net](mailto:rbudahl@cableone.net)  
website: [www.nwmhloan.com](http://www.nwmhloan.com)  
12360 Landau Way  
Nampa, ID 83686

### **SOUND COMMUNITY BANK**

Mark Weick  
800-458-5585 ext. 421  
[mark.weick@soundcb.com](mailto:mark.weick@soundcb.com)  
2941 S. 38<sup>th</sup> Street  
Tacoma, WA 98409

### **CROSS COUNTRY MORTGAGE**

Lisa McCormick  
503-931-2185 phone  
[Lisa.McCormick@ccm.com](mailto:Lisa.McCormick@ccm.com)

### **ROGUE CREDIT UNION**

Richard Burroughs  
541-622-7841  
[rburroughs@roquecu.org](mailto:rburroughs@roquecu.org)

### **COUNTRY PLACE MORTGAGE**

Lisa Reynolds  
360-709-9191  
[lreynolds@countryplacemortgage.com](mailto:lreynolds@countryplacemortgage.com)  
  
Troy Morrow  
[tmorrow@countryplacemortgage.com](mailto:tmorrow@countryplacemortgage.com)

### **CREDIT HUMAN**

J. Bretton  
877-475-6852 x 2607 office  
[JBretton@CreditHuman.com](mailto:JBretton@CreditHuman.com)  
60 Lake Street, Ste 200  
St. Albans, VT 05478

### **MORTGAGE COUCH**

Tim Leatherman  
503-342-8525 office  
503-317-9828 cell  
888-849-2316 fax  
[timl@mortgagecouch.com](mailto:timl@mortgagecouch.com)